

WOLFFKRAN

WOLFFNews^{UK}

THE CUSTOMER NEWSLETTER OF WOLFFKRAN UK

ISSUE 1 - APRIL 2023



WOLFFKRAN to Showcase its Lifting Solutions at Vertikal Days 2023.

We are delighted to invite you to visit us at Vertikal Days 2023. This event will take place on 10th and 11th May at the East of England Showground, Peterborough.



This year, WOLFFKRAN will be showcasing our luffing jib crane model, WOLFF 355 B. From the world of lifting solutions, WOLFF Onsite will present the latest safety and security systems like Big Red (counter lever cage), a new Anti-climb camera system as well as the Vita Load Navigation beam that prevents the load from spinning.

WOLFFKRAN will also host 1Guava software solutions who will be showcasing their Hook Time App. This intuitive App tracks crane utilisation in real time with just one tap and is already benefiting many contractors across the UK.

If you enjoy challenges, come along and see our new WOLFF Assist technology. Don't miss the opportunity to find a bug in our electric unit using remote AR glasses.

We look forward to welcoming you on our 607/608 stand!

Newsletter Highlights

Construction of New Office Building [page 2](#)

New Cranes Set to Join UK Fleet in 2023 . . [page 3](#)

Our Journey Towards a Greener Future . . [page 4](#)

WOLFFKRAN's Bespoke Lifting Management Courses [page 5](#)

1Guava- Hook Time app in Action [page 6](#)

What Next for WOLFF Onsite? . . [page 7](#)

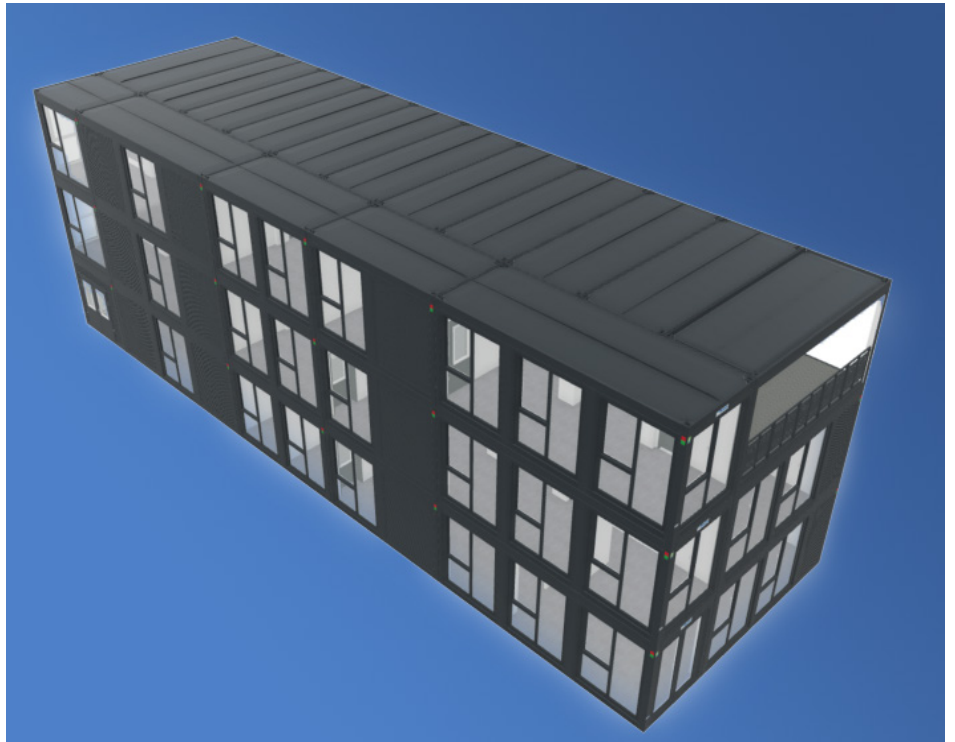


MD'S WELCOME

Welcome to our first customer newsletter of 2023. Our aim is to share business news every quarter to update you on key developments and activities at WOLFFKRAN UK.

The last few years have been very challenging for many businesses and we are no different. That said, we have weathered the storm and have a lot to look forward to this year. I am pleased we will have more brand new WOLFF cranes joining our rental fleet, we will be upgrading our offices as well as starting a refurbishment program of some of our facilities at our Sheffield Head Office. This will ensure we are able to continue to provide the best lifting solutions to the UK rental market in the future. We hope you find our newsletter informative and look forward to serving you throughout the year.

Richard Coughtrey
Managing Director



Construction of New Office Building Scheduled to Commence This Year!

Our office building at our Sheffield Head Office will be receiving a well deserved makeover. We are excited to be working with an industry leading modular building provider to make our vision a reality.

With the current two storey building set to be replaced with a modern three storey structure, we're introducing some cutting-edge technology to increase efficiency and environmental sustainability. The new building design includes an open-plan concept on each floor and offers enhanced meeting space.

According to Adrian Hawkins, our Sales Director, *"The new layout and modern design will have a very positive impact on our employees while also creating a welcoming environment for visitors creating a contemporary meeting space for our customers."*

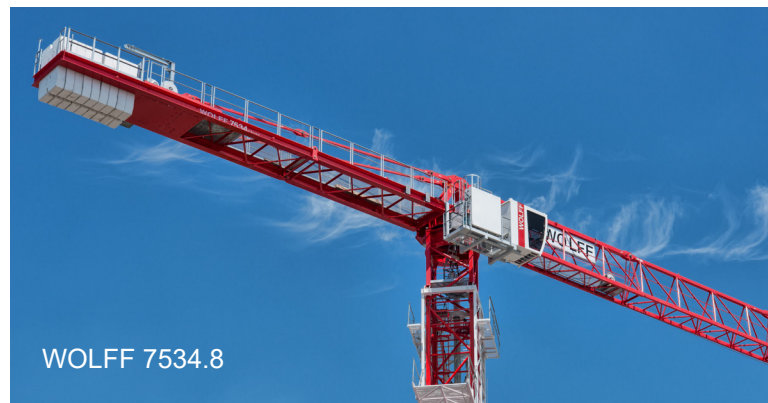
We're thrilled to see this project come to fruition and look forward to sharing more updates as we progress.





Ten brand new cranes manufactured at the WOLFFKRAN factories in Germany, are to be added to the UK rental fleet this year. We are excited about the possibilities these new cranes will bring to your projects, and we look forward to seeing them working on our client's sites.

WOLFFKRAN are committed to provide our customers with industry leading, safe and reliable lifting solutions to ensure our customers benefit from a fluid fleet. Dave Holder, European Operations Director said *“Our cranes remain the premium products of the industry and our investment in the UK rental fleet remains continuous. We monitor the reliability of our rental fleet very closely and implement an extensive preventative maintenance program to ensure we are able to boast an incredible performance and reliability record”*.



What you need to know about our new cranes?

WOLFF 235 B – This luffing jib crane is based on the proven load capacities of its predecessor (WOLFF 180 B). It excels on high-rise construction sites with a significant amount of reinforced concrete. It has a maximum lifting capacity of 16 tonnes and a reach of up to 60 metres.

WOLFF 275 B - offers a maximum lifting capacity of 24 tonnes and a reach of up to 60 metres. Due to their compact design, WOLFF luffing cranes are easy to assemble and disassemble, making them ideal for sites with limited space.

WOLFF 355 B – is designed to work efficiently in tight spaces and is easy to assemble and disassemble for a crane of this size. This model is the ideal construction crane for the UK market especially when considering growing modular construction and increasingly heavier panel weights. It has a maximum lifting capacity of 28 tonnes and a reach of up to 60 metres.

WOLFF 7534.8 Tower Crane, with a clear and “tidy” design of its flattop, allows easy access to all parts. The jib can be assembled in the air, which is particularly helpful when the small mobile crane is used, or there is not enough space on the ground available for the preassembly. The 7534.8 offers a maximum lifting capacity of 8.5 tonnes and a reach of up to 75 metres making this a perfect model for mid-size construction projects, especially when the multi-crane scheme is in place and cranes have to slew above each other.

Driving Sustainability: Our Journey

Towards a Greener Future

At WOLFFKRAN we believe that sustainability is integral to our business success and that we have a responsibility to take actions to address the challenges facing our planet and society. Our key step towards this in 2022 was the establishment and implementation of an ISO 14001 standard environmental management system. This provides a framework through which we can track and reduce our environmental impact, save energy, and improve our sustainability performance.

One of the critical aspects of the ISO 14001 standard is energy management. Energy consumption comprises a significant proportion of our greenhouse gas emissions, and reducing energy use has the potential to significantly reduce our carbon footprint. Through implementing an extensive environmental monitoring system, we identified a key area of inefficiency; behavioural energy use in the workplace. Through a cohesive cross-organisational effort, we are working to create an energy conscious workforce that considers the environmental impact of their actions at work. This has resulted in an 18.5% electricity saving in December 2022 when compared to our electricity usage in December 2021. This represents preventing the emission equivalent of 1.8 tons of CO₂, or the electricity to charge 223,214 smartphones!



While this is fantastic progress, here at WOLFFKRAN we also recognise our corporate responsibility to generate social value within our local community. This is why we have also acquired a gold level corporate membership with Sheffield and Rotherham Wildlife Trust to protect our local ecology and help maintain wildlife habitats for the enjoyment of our surrounding communities. We recognise that we have a long road ahead of us to become a sustainable company, but through our commitment and will to constantly improve our environmental, social, and governance performance, we will achieve this. Watch this space!

Niall Conroy
Environmental Consultant

WOLFFKRAN's bespoke

Lifting Management Courses



As a principle contractor, knowing that your team have the knowledge of managing lifting operations on the project, can be reassuring. Maintaining a safe lifting environment on site is crucial to the success of the project. Lifting Management training provides the knowledge and understanding required to fulfil these requirements.

WOLFF training courses are bespoke and are built around the customer's own internal lifting policies and procedures. These courses not only inform of current legislation and best practice, but underpin the customer's own requirements. We also offer continued support to all of our attendees and pride ourselves on making our industry a safer place.

In 2022 the WOLFF Training department delivered 46 lifting management courses to Mace, Kier, Bam, Lendlease, Dornan, Torsion, Britcon and many more customers. Courses can be face to face in the classroom environment or delivered online utilising our own online training platform. We regularly have attendees logging on from not only the UK but also in the Netherlands, Ireland, Saudi Arabia and Qatar.

The WOLFF Training department is renowned for delivering excellent customer service, as evidenced by the glowing testimonials from our clients:

"The course was engaging, informative and interesting. My objective for this course was to gain a better understanding of the foundations of lifting plans and the training delivered this and more. I found the discussion points compelling and enjoyed hearing different experiences from across the business and industry. Definitely made me think and took away plenty to look out for going forward. Would highly recommend."

Graham Murphy
MCIQB RICS Lendlease, BIM Manage

"The Management of Lifting Operations training provided by Wolffkran was delivered to an extremely high standard. The course content was comprehensive, well delivered and covered all aspects of lifting operations. The trainer Jonathan Parker was knowledgeable and encouraged attendee engagement throughout the course. I would strongly recommend the course".

Calum Volrath
SHEQ Advisor, BRITCON

**To find out more please contact:
Jonathan Parker, Training Manager - j.parker@wolffkran.com**

1Guava - Hook Time app in Action at 8 Bishopsgate project



Capturing crane utilisation data has, for some time, remained an ongoing challenge. Typically, the principal contractor would require a secretary to capture crane utilisations recorded on paper by the operators. On the 8 Bishopsgate project, WOLFFKRAN set out to trial a system of acquiring crane utilisation data without the need of a secretary - one that wouldn't take up anyone else's time and which would be easier for crane operators.

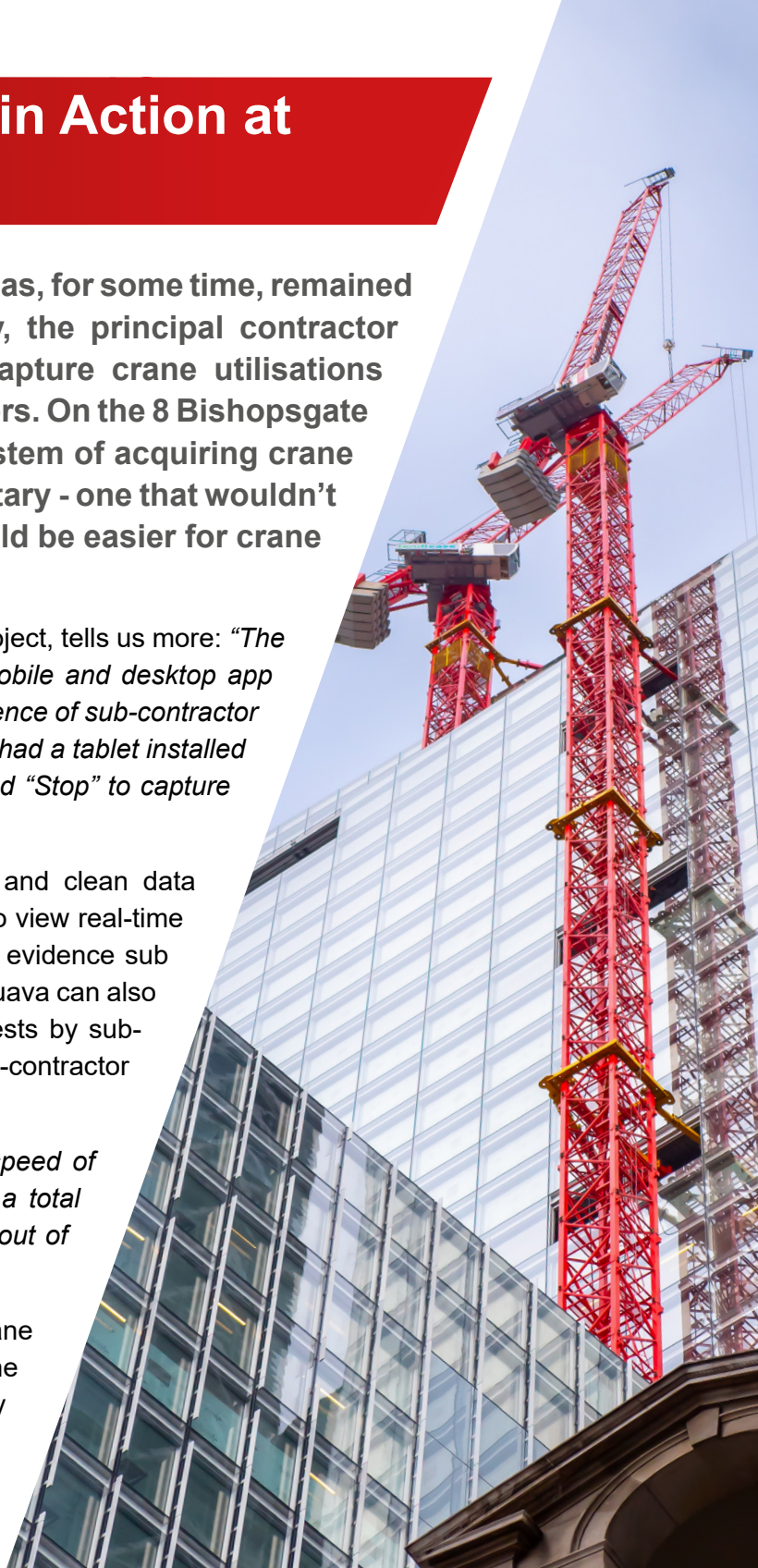
Alan Stewart, Appointed Person on 8 Bishopsgate project, tells us more: *"The solution we implemented is called 1Guava. It's a mobile and desktop app that brought all the teams together and provided evidence of sub-contractor hook time usage vs their allocations. Each crane cab had a tablet installed in it and the operators simply had to press "Play" and "Stop" to capture usage by various sub-contractors."*

The system was up and running within 24 hours and clean data started to pour in. Selected stakeholders were able to view real-time reports from anywhere, making it easier to plan and evidence sub-contractors' utilisation of any crane on the project. 1Guava can also be used to accept, rebook or decline booking requests by sub-contractors and is an invaluable tool in eliminating sub-contractor disputes and enabling maximum utilisation.

"Everyone involved was really impressed with the speed of the system roll-out and the live reports have been a total game-changer. 1Guava has really taken the hassle out of that aspect of the job" concluded Alan.

8 Bishopsgate has relied on 1Guava for clean crane utilisation data ever since, and we are proud to be the first to offer to our customers this pioneering technology in crane management and utilisation tracking on the 1Guava platform.

[Click here for full article >>](#)



A total of five WOLFF 355 B luffing cranes are working on the construction of two plots for one of London's largest mixed-use regeneration projects, Canada Water.

[Click here for full article >>](#)



**WOLFF
Onsite**

Tel: 01709 559668

**What next for
WOLFF Onsite?
Interview with
Tom McDaid**

Meet Tom McDaid, Sales Director for our WOLFF Onsite in house accessories department. Tom has worked continuously within the construction industry for over 14 years and has a real passion for lifting. Following joining the business in 2022, Tom quickly identified improvement areas and built on the existing strong relationships with clients and suppliers.

We asked Tom what our customers can look forward to in 2023.

Can you tell us what is WOLFF Onsite?

WOLFF Onsite offers a range of lifting accessories across many sectors. Being WOLFFKRAN, of course Tower Cranes is our speciality. Our aim is to offer solutions to meet the lifting requirements of construction sites, as we look to introduce new products to improve safety and efficiency on-site.

What is your vision for WOLFF Onsite and what can customers expect?

Our vision is to become a one-stop shop for all construction site requirements. We are continuously increasing our product portfolio of lifting equipment and accessories to achieve this. This year, we will launch a new e-commerce website to make it easier for our customers to access our products. In the future, we will also offer accessories for other construction machinery.

What products can we expect from WOLFF Onsite in the future?

We are continually speaking to our customers and WOLFFKRAN Appointed Persons to ask for new ideas and ways to help them. Currently, we are working with a new monitored CCTV camera system to prevent 'Urban Explorers' climbing the cranes. Also a device that records all radio activity on site between the crane operator and lifting team, which can later be used for training or Health and Safety purposes. We are trialling a new stabilizing beam to prevent the load spinning in windy conditions and give users positioning control of the lifted item without the need for tag lines.

Customers can contact Tom directly at 07442 082394 or via email at t.mcdaid@wolffkran.com

Thanks for reading! 

The next edition of WOLFFNews will be available in July 2023.

WOLFFKRAN Ltd.
Grange Mill Lane
Sheffield, S9 1HW
United Kingdom
+44 1709 55 96 68
www.wolffkran.com