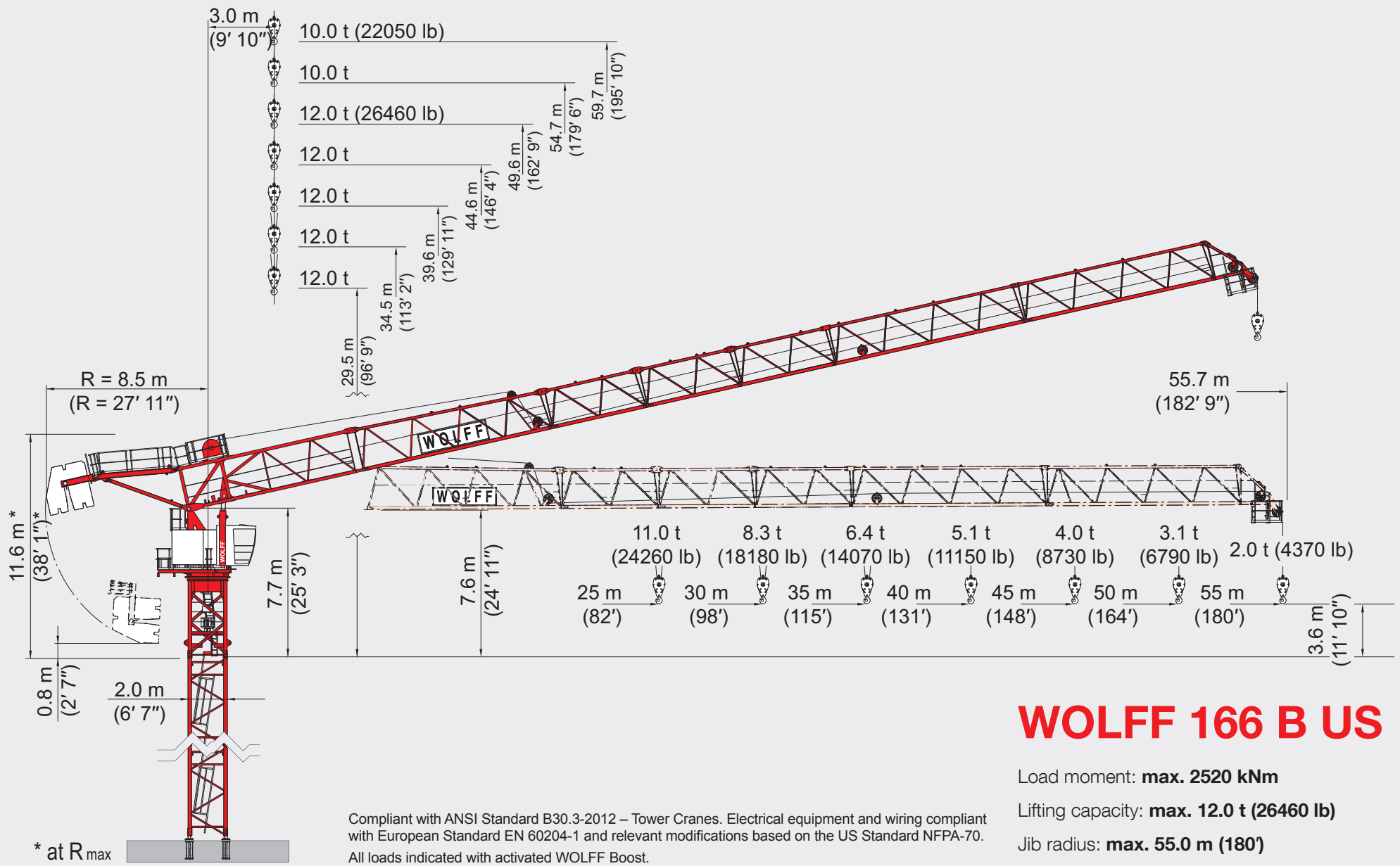
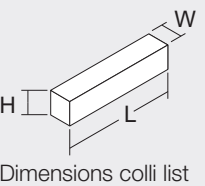


# WOLFFKRAN



## WOLFF 166 B US · Colli List

Pos.	Pcs.	Description	Colli	Length [m] (ft)	Width [m] (ft)	Height [m] (ft)	Weight [kg] (lb)	Volume [m³] (ft³)
1	1	Tower top complete with UV 20 / TV 20 connection		7.90 (25' 11")	2.25 (7' 5")	2.55 (8' 4")	13200 (29101)	45.33 (1600.82)
		Connection frame Item 1 disassembled		3.30 (10' 10")	1.45 (4' 9")	2.50 (8' 2")	5830 (12853)	11.96 (422.36)
		Tower top lower part Item 1 disassembled		5.90 (19' 4")	2.25 (7' 5")	2.45 (8' 0")	7360 (16226)	32.52 (1148.43)
2	1	Operator's cabin with suspension		5.20 (17' 1")	1.90 (6' 3")	2.55 (8' 4")	2500 (5512)	25.19 (889.58)
3	1	Counterjib folded		4.90 (16' 1")	2.15 (7' 1")	1.25 (4' 1")	4200 (9259)	13.17 (465.09)
4	1	Hoisting winch Hw1260FU with platform and hoisting rope Ø 20 mm (575 m = 1150 kg (1887 = 2535 lb))		3.10 (10' 2")	2.35 (7' 9")	1.10 (3' 7")	3150 (6944)	8.01 (282.87)
5	1	Jib element 1		9.50 (31' 2")	1.55 (5' 1")	2.45 (8' 0")	5420 (11949)	36.08 (1274.15)
6	1	Jib element 2		10.30 (33' 10")	1.40 (4' 7")	2.45 (8' 0")	2460 (5423)	35.33 (1247.67)
7	2	Jib element 3		5.25 (17' 3")	1.40 (4' 7")	2.15 (7' 1")	950 (2094)	15.80 (557.97)
8	1	Jib element 4		5.25 (17' 3")	1.40 (4' 7")	2.15 (7' 1")	830 (1830)	15.80 (557.97)
9	1	Jib element 5		10.25 (33' 8")	1.40 (4' 7")	2.15 (7' 1")	1520 (3351)	30.85 (1089.46)
10	1	Jib element 6		10.25 (33' 8")	1.40 (4' 7")	2.15 (7' 1")	970 (2138)	30.85 (1089.46)
11	1	Jib element 7		2.45 (8' 0")	1.45 (4' 9")	2.95 (9' 8")	450 (992)	10.48 (370.1)
12	1	Hook block U 8/16		1.45 (4' 9")	0.65 (2' 2")	0.30 (1' 0")	600 (1323)	0.28 (9.89)
13	1	Standard railings		2.05 (6' 9")	1.10 (3' 7")	0.65 (2' 2")	160 (353)	1.47 (51.91)
14	6	Counterweight blocks		2.30 (7' 7")	0.50 (1' 8")	2.35 (7' 9")	5200 (11464)	2.70 (95.35)



WOLFFKRAN GmbH  
 Austraße 72  
 D-74076 Heilbronn  
 Tel. +49 7131 9815-0  
 Fax +49 7131 9815-355  
 info@wolffkran.de  
 www.wolffkran.de

# WOLFF 166 B US

## Main Components

25 m (82') basic jib with hoist drive. Extensions up to 55 m (180') radius in 5 m (16') steps. Connection frame with hydraulic cylinder for luffing of the jib. Slewing frame with driver's cabin, control cabinet, slewing gear, slewing bearing with central lubrication unit and slipping system. Counterjib with platform and counterweights.

## Drive Technique

Luffing drive with hydraulic cylinder incl. power pack and squirrel cage motors, fully thermal protected. Other drives frequency controlled squirrel cage motors, fully thermal protected. Hoisting winch Hw1260FU. Slewing gear with electrically operated weather vaning device. Automatic wind force compensation controls.

## Electrical Equipment

Multivoltage equipment for supplies of 480 V Y / 277 V 60 Hz. Electronic safety crane controls with bus technology. Incremental absolute encoders for all operating movements. Electronic load measuring device. Colour display as touch screen showing information to operator, both operational and diagnostics.

## Safety Devices

Electronic overload protection with WOLFF Boost. Increased load moment limitation by automatically hoisting speed reduction. Menu guided setting of overload protection system and of all limiters from operators cabin. Working space limiter. Anti collision interface. Electronic controlled level luffing.

## Tower Elements, Climbing Device

Tower configuration of WOLFF system tower elements. WOLFF slug bolt connection. Detachable hydraulic WOLFF external climber KWH 20.3 resp. internal climbing gear KSH 20 M.

## Crane Base

As travelling version on WOLFF system mobile crossframe KRF with gauge of 6.0 m up to 10.0 m (20' - 33') or stationary on crossframe KR or alternative on foundation anchors. WOLFF cross frames KR can be modified to KRF.

## Power Requirements and hook paths (Slewing part)

91 kVA (Hw1260FU), hook path 250 m (820') in 2-fall operation

## Mechanisms · WOLFF 166 B US · (Hw 1260 FU)

Motor [kW] (hp)	60 (80)	60 (80)	22 (29)	7.5 (8)	4 x 5.5 (4 x 7.4)
Speed	0 - 1.1 t (0 - 2425 lb) 0 ... 174 m/min (0 ... 377 ft/min) stepless 0 - 6.0 t (0 - 13230 lb) (0 ... 47 m/min) (0 ... 154 ft/min)	0 - 2.9 t (0 - 6393 lb) 0 ... 57 m/min (0 ... 187 ft/min) stepless 0 - 12.0 t (0 - 26460 lb) (0 ... 25 m/min) (0 ... 82 ft/min)	1.5 min	0.80 min <sup>-1</sup>	30.0 m/min (98 ft/min)
Hook path [m] (ft)	500 (1640')	250 (820')			

## Load Data [t] (lb) · WOLFF 166 B US

Jib radius [m] (ft)		[m] (ft)	20.0 (65' 7")	25.0 (82' 0")	30.0 (98' 5")	35.0 (114' 10")	40.0 (131' 3")	45.0 (147' 8")	50.0 (164' 1")	55.0 (180' 5")	Load capacity [t] (lb)
Jib length [m] (ft)	55.0 (180') 3.0 - 28.3 (9' 10" - 92' 10")		[t] (lb)	6.0 (13230)	6.0 (13230)	5.5 (12150)	4.3 (9580)	3.5 (7650)	2.8 (6150)	2.3 (4950)	
	50.0 (164') 3.0 - 31.2 (9' 10" - 102' 4")		[t] (lb)	6.0 (13230)	6.0 (13230)	6.0 (13230)	5.1 (11190)	4.1 (9100)	3.4 (7470)	<b>2.8 (6170)</b>	
	45.0 (148') 3.0 - 32.0 (9' 10" - 105' 0")		[t] (lb)	6.0 (13230)	6.0 (13230)	6.0 (13230)	5.3 (11660)	4.3 (9560)	<b>3.6 (7940)</b>		
	40.0 (131') 3.0 - 33.0 (9' 10" - 108' 3")		[t] (lb)	6.0 (13230)	6.0 (13230)	6.0 (13230)	5.5 (12220)	<b>4.6 (10140)</b>			
	35.0 (115') 3.0 - 35.0 (9' 10" - 114' 10")		[t] (lb)	6.0 (13230)	6.0 (13230)	6.0 (13230)	<b>6.0 (13230)</b>				
	30.0 (98') 3.0 - 30.0 (9' 10" - 98' 5")		[t] (lb)	6.0 (13230)	6.0 (13230)	<b>6.0 (13230)</b>					
	25.0 (82') 3.0 - 25.0 (9' 10" - 82' 0")		[t] (lb)	6.0 (13230)	<b>6.0 (13230)</b>						
Jib length [m] (ft)	55.0 (180') 3.0 - 19.0 (9' 10" - 62' 4")		[t] (lb)	9.4 (20630)	6.9 (15260)	5.3 (11670)	4.1 (9110)	3.3 (7190)	2.6 (5700)	2.0 (4500)	<b>1.6 (3530)</b>
	50.0 (164') 3.0 - 21.0 (9' 10" - 68' 11")		[t] (lb)	10.0 (22050)	8.0 (17550)	6.2 (13610)	4.9 (10790)	3.9 (8690)	3.2 (7040)	<b>2.6 (5730)</b>	
	45.0 (148') 3.0 - 18.4 (9' 10" - 60' 4")		[t] (lb)	10.8 (23890)	8.2 (18530)	6.4 (14050)	5.1 (11240)	4.1 (9130)	<b>3.4 (7500)</b>		
	40.0 (131') 3.0 - 18.7 (9' 10" - 61' 4")		[t] (lb)	11.1 (24410)	8.4 (18530)	6.6 (14600)	5.4 (11800)	<b>4.4 (9700)</b>			
	35.0 (115') 3.0 - 19.3 (9' 10" - 63' 4")		[t] (lb)	11.5 (25390)	8.9 (19510)	7.1 (15590)	<b>5.8 (12790)</b>				
	30.0 (98') 3.0 - 20.0 (9' 10" - 65' 7")		[t] (lb)	12.0 (26460)	9.3 (20500)	<b>7.5 (16530)</b>					
	25.0 (82') 3.0 - 21.0 (9' 10" - 68' 11")		[t] (lb)	12.0 (26460)	<b>10.0 (22050)</b>						

## Increasing load capacities in 1-fall operation

To increase the load capacity by 250 kg (551 lb) in 1-fall operation, a separate hook block is available.

## Load Data [t] (lb) · WOLFF 166 B US · WOLFF Boost

Jib radius [m] (ft)		[m] (ft)	20.0 (65' 7")	25.0 (82' 0")	30.0 (98' 5")	35.0 (114' 10")	40.0 (131' 3")	45.0 (147' 8")	50.0 (164' 1")	55.0 (180' 5")	Load capacity [t] (lb)
Jib length [m] (ft)	55.0 (180') 3.0 - 30.2 (9' 10" - 99' 1")		[t] (lb)	6.0 (13230)	6.0 (13230)	6.0 (13230)	4.8 (10540)	3.8 (8420)	3.1 (6770)	2.5 (5450)	
	50.0 (164') 3.0 - 33.3 (9' 10" - 109' 3")		[t] (lb)	6.0 (13230)	6.0 (13230)	6.0 (13230)	5.6 (12310)	4.5 (10010)	3.7 (8220)	<b>3.1 (6790)</b>	
	45.0 (148') 3.0 - 34.2 (9' 10" - 112' 2")		[t] (lb)	6.0 (13230)	6.0 (13230)	6.0 (13230)	5.8 (12830)	4.8 (10520)	<b>4.0 (8730)</b>		
	40.0 (131') 3.0 - 35.4 (9' 10" - 116' 2")		[t] (lb)	6.0 (13230)	6.0 (13230)	6.0 (13230)	6.0 (13230)	<b>5.1 (11150)</b>			
	35.0 (115') 3.0 - 35.0 (9' 10" - 114' 10")		[t] (lb)	6.0 (13230)	6.0 (13230)	6.0 (13230)	<b>6.0 (13230)</b>				
	30.0 (98') 3.0 - 30.0 (9' 10" - 98' 5")		[t] (lb)	6.0 (13230)	6.0 (13230)	<b>6.0 (13230)</b>					
	25.0 (82') 3.0 - 25.0 (9' 10" - 82' 0")		[t] (lb)	6.0 (13230)	<b>6.0 (13230)</b>						
Jib length [m] (ft)	55.0 (180') 3.0 - 20.4 (9' 10" - 66' 11")		[t] (lb)	10.0 (22050)	7.6 (16790)	5.8 (12840)	4.5 (10020)	3.6 (7910)	2.9 (6270)	2.2 (4950)	<b>1.8 (3880)</b>
	50.0 (164') 3.0 - 22.6 (9' 10" - 74' 2")		[t] (lb)	10.0 (22050)	8.8 (19310)	6.8 (14970)	5.4 (11870)	4.3 (9560)	3.5 (7740)	<b>2.9 (6300)</b>	
	45.0 (148') 3.0 - 19.9 (9' 10" - 65' 3")		[t] (lb)	11.9 (26280)	9.0 (19790)	7.0 (15460)	5.6 (12360)	4.6 (10040)	<b>3.7 (8250)</b>		
	40.0 (131') 3.0 - 20.2 (9' 10" - 66' 3")		[t] (lb)	12.0 (26460)	9.2 (20380)	7.3 (16060)	5.9 (12980)	<b>4.8 (10670)</b>			
	35.0 (115') 3.0 - 21.0 (9' 10" - 68' 11")		[t] (lb)	12.0 (26460)	9.7 (21460)	7.8 (17150)	<b>6.4 (14070)</b>				
	30.0 (98') 3.0 - 21.8 (9' 10" - 71' 6")		[t] (lb)	12.0 (26460)	10.2 (22550)	<b>8.3 (18180)</b>					
	25.0 (82') 3.0 - 23.0 (9' 10" - 75' 6")		[t] (lb)	12.0 (26460)	<b>11.0 (24260)</b>						

## WOLFF Boost

With the WOLFF Boost function, the load is allowed to exceed the load torque range specified for the lifting capacities by up to 10%. This is, however, subject to the restriction that hoisting gear and trolley gear must only be moved alternately.